

GROUP  
STEERING  
DATE

FEBRUARY, 2014

NUMBER

14-ST-001

MODEL(S)

SONATA (YF)

SUBJECT:

2011~2014MY YF SONATA STEERING CALIBRATION

Description:

The Motor Drive Power Steering (MDPS) has a feature to allow for slight adjustments in steering effort. This bulletin describes the procedure to change MDPS calibration using GDS to suit the driver's preference on 2011~2013 model year Sonata (YF) vehicles. 2014 models can be changed using the vehicle's Driver Selectable Steering Mode feature described below.

Applicable Vehicles: 2011~2014MY Sonata (YF) vehicles.

**Notes:**

- ^ 2011~2013MY Sonata GLS and Limited trim models come standard with "GLS" calibration.
- ^ 2011~2013MY Sonata SE trim models come standard with "SE" calibration.
- ^ 2014MY Sonata features DSSM (Driver Selectable Steering Mode).
- ^ Pressing the DSSM button on the steering wheel cycles through a set of 3 calibrations ("Comfort", "Normal", and "Sport") within GLS, or SE groups. See table.
- ^ 2014MY Sonata GLS and Limited trim models come standard with "GLS" calibration groups.
- ^ 2014MY Sonata SE trim models come standard with "SE" calibration groups.
- ^ "GLS" calibrations are slightly lower steering effort than "SE" calibrations.

Model Year	Additional Info	Available calibrations	Notes
2011	All	1. Low 2. GLS 3. SE 4. High	"Low" is for drivers who prefer a slightly lower effort than "GLS."
2012	Produced Sept. 23, 2011 and earlier		"High" is for drivers who prefer a slightly higher effort than "SE."
	Produced Sept. 24, 2011 and later	1. GLS 2. SE 3. Sport	"Sport" is for drivers who prefer a slightly higher effort than "SE."
2013	ECU S/W No: 1207 and higher	1. Low 2. GLS 3. SE 4. High	"Low" is for drivers who prefer a slightly lower effort than "GLS." "High" is for drivers who prefer a slightly higher effort than "SE."
	ECU S/W No: Lower than 1207	1. GLS 2. SE 3. Sport	"Sport" is for drivers who prefer a slightly higher effort than "SE."
2014	All	1. GLS Comfort 2. GLS Normal 3. GLS Sport	If any GLS calibration is selected, pressing the DSSM button will cycle through calibrations #1~3.
		4. SE Comfort 5. SE Normal 6. SE Sport	If any SE calibration is selected, pressing the DSSM button will cycle through calibrations #4~6.

Calibration Table

Warranty Information: Non-Warrantable

GDS General Precautions:

--



- ^ Connect the USB cable between the GDS and the VCI.
- ^ Connect the 16-pin DLC connector from the VCI into the DLC located under the driver's side dash.

**NOTICE**

Make sure the battery icon at the bottom right of the GDS laptop shows at least 50%; if not, charge the GDS or attach a battery charger.

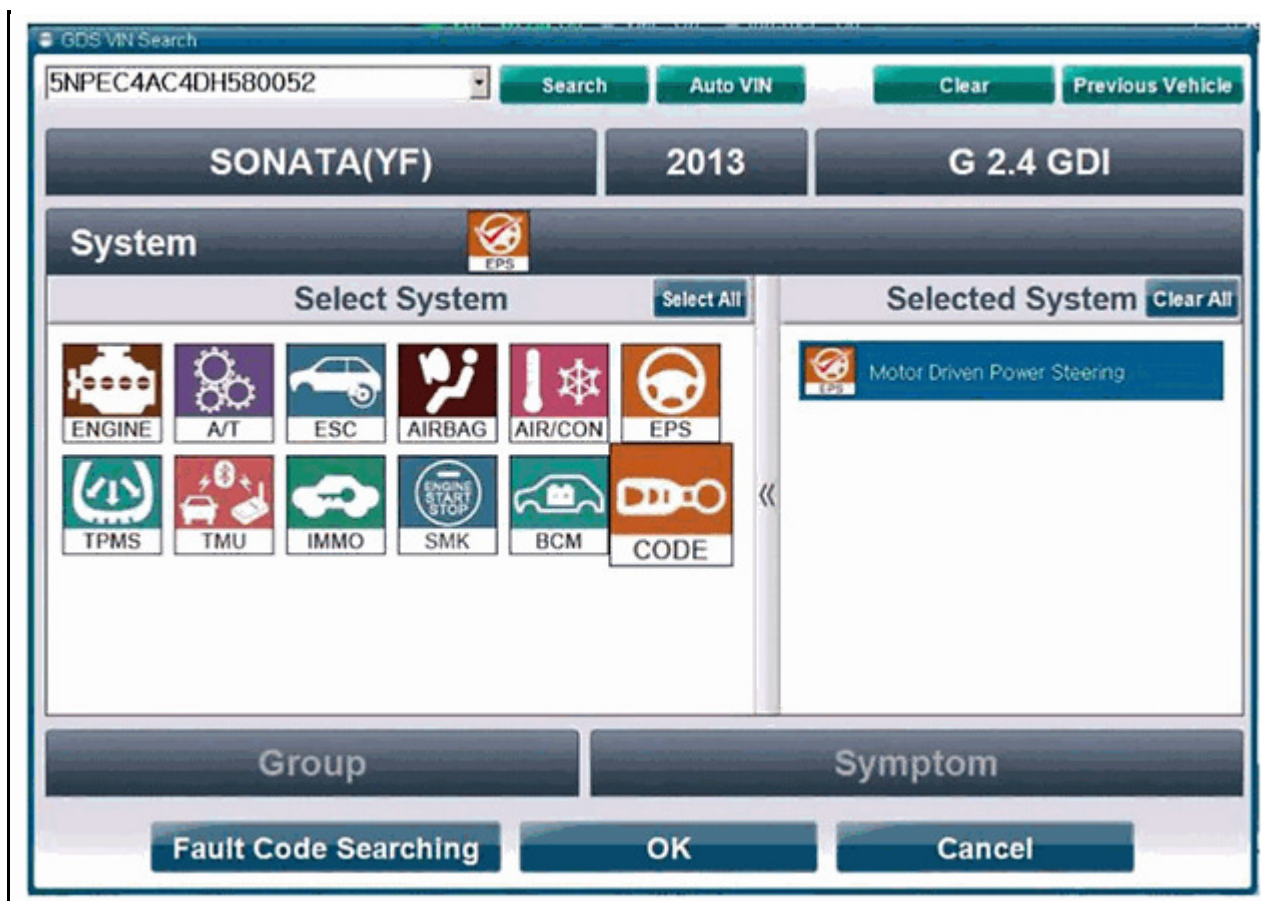
- ^ Turn off all lights (Do not leave the headlight switch in auto mode) and all accessories (including heater/air conditioner/fan, audio, heated seats, rear defroster, etc.) to ensure the battery will not be discharged during the update.
- ^ Perform the update with the ignition key in the ON position. (Turn ignition key to the ON position or press the Start-Stop button 2 times without depressing the brake pedal).
- ^ Do not disconnect any cables connected to the vehicle or the GDS during the update.
- ^ Do not start the engine or turn the ignition switch OFF during the update.

**NOTICE**

Confirm your GDS has the most recent version. If not, connect the GDS to an Internet port, open the GDS home page and select "Update". Refer to instructions on [hmaservice.com](http://hmaservice.com) if necessary.

If you encounter GDS related problems, call the GIT Helpline at 888-437-0308.

Service Procedure:



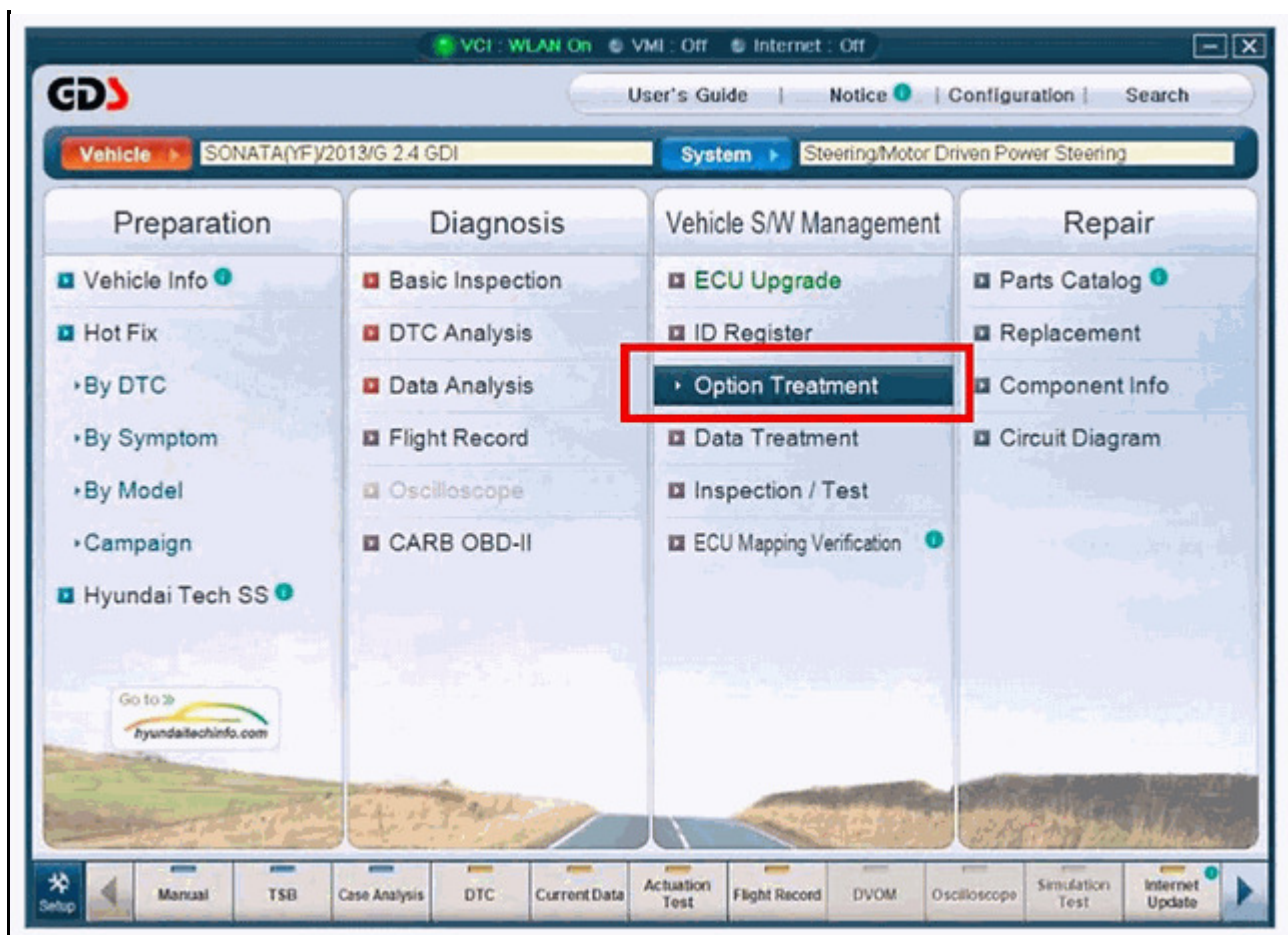
1a.From the GDS VIN Search screen, select EPS system, then click OK.

1b.**NOTE**

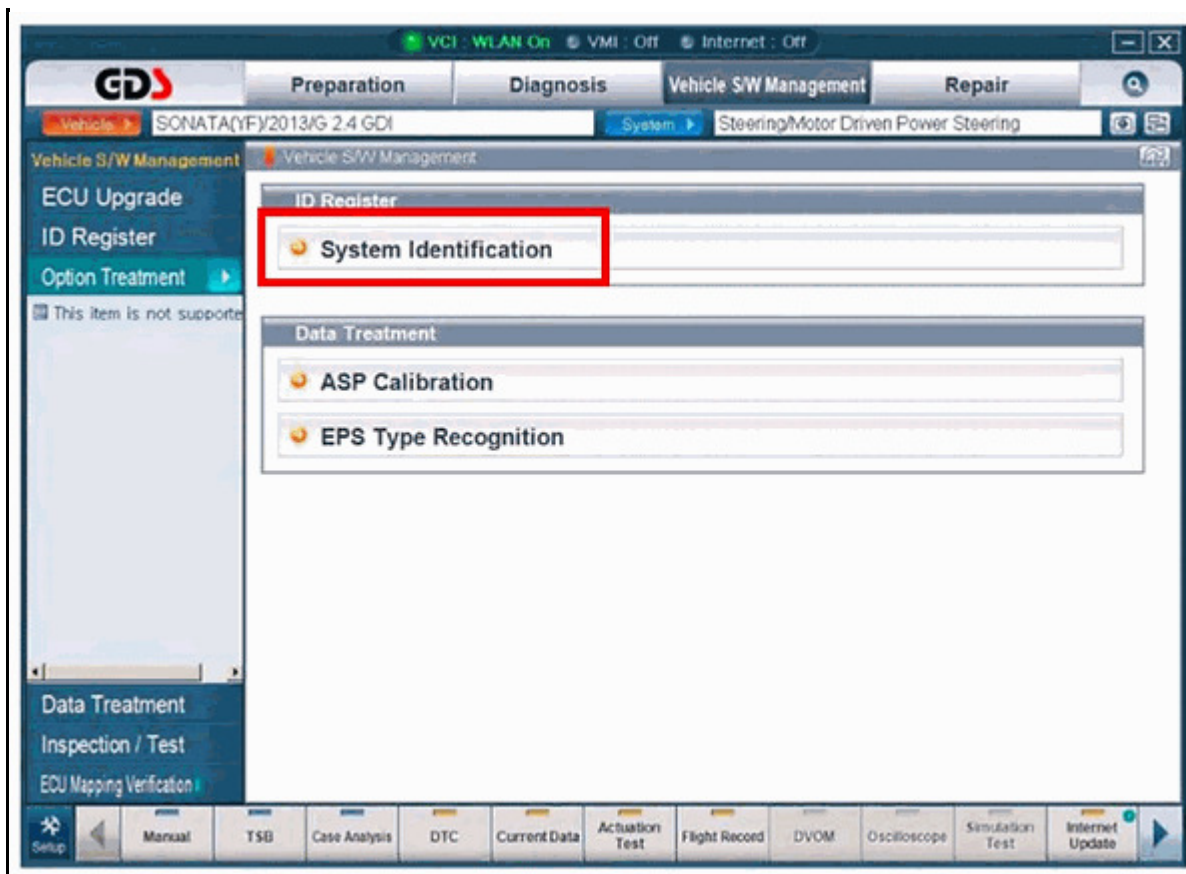
A screenshot of a vehicle calibration interface. It features a light blue border and a white background. At the top, there are two radio button options: "Motor Driven Power Steering(~September23/2011)" and "Motor Driven Power Steering(September24/2011~)". Below these options is a large, empty white rectangular area. At the bottom center, there is a blue button with the word "Cancel" in white text.

For 2012MY vehicles, when choosing the EPS system, the GDS will ask the user to select the production date range, as shown below. This will affect which calibration choices the user has, according to the Calibration Table.  
For other model years, the GDS will not ask for this production date range.

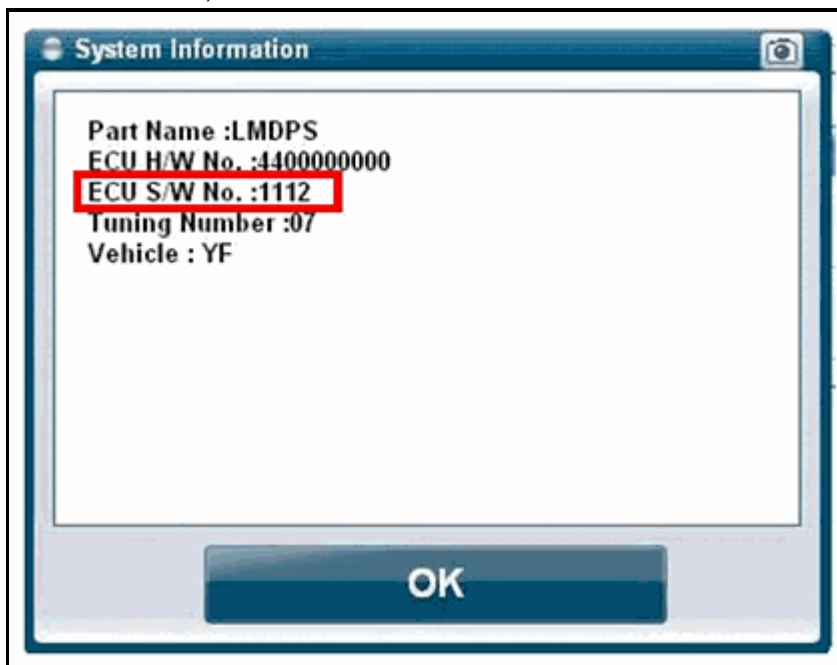
A large, empty rectangular box with a black border, intended for the user to select a production date range for 2012MY vehicles.



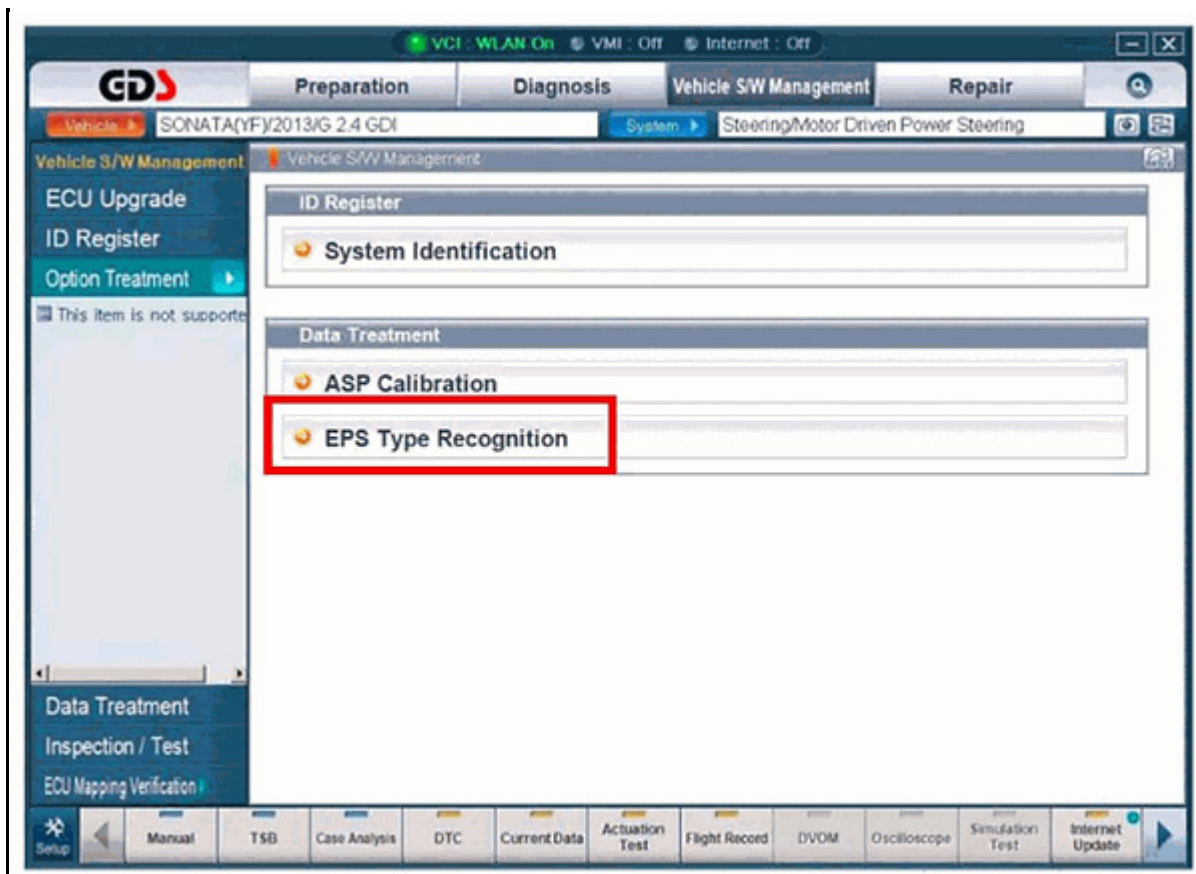
2. Select Option Treatment.



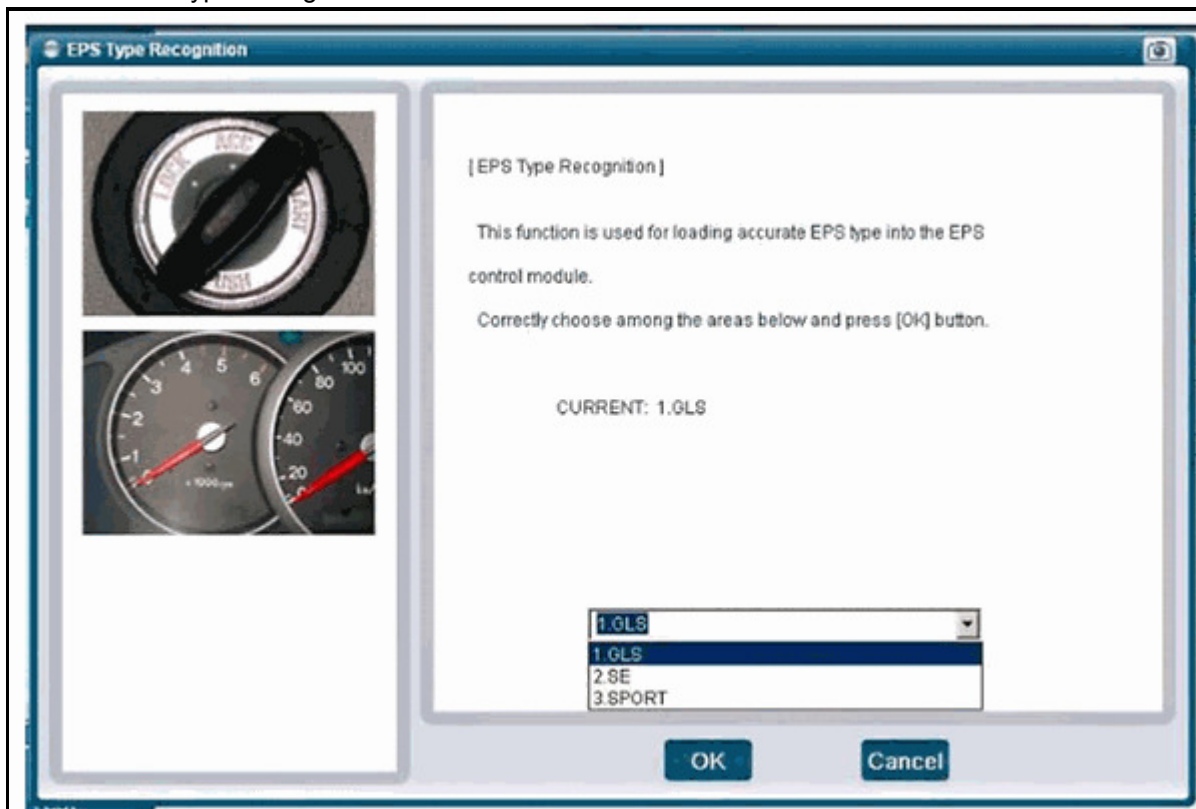
3a. It is optional to check the current ECU S/W No by selecting System Identification. The software number affects 2013MY vehicles, as described in the Calibration Table.



3b. The ECU S/W No. is displayed, below. Click "OK" to continue.

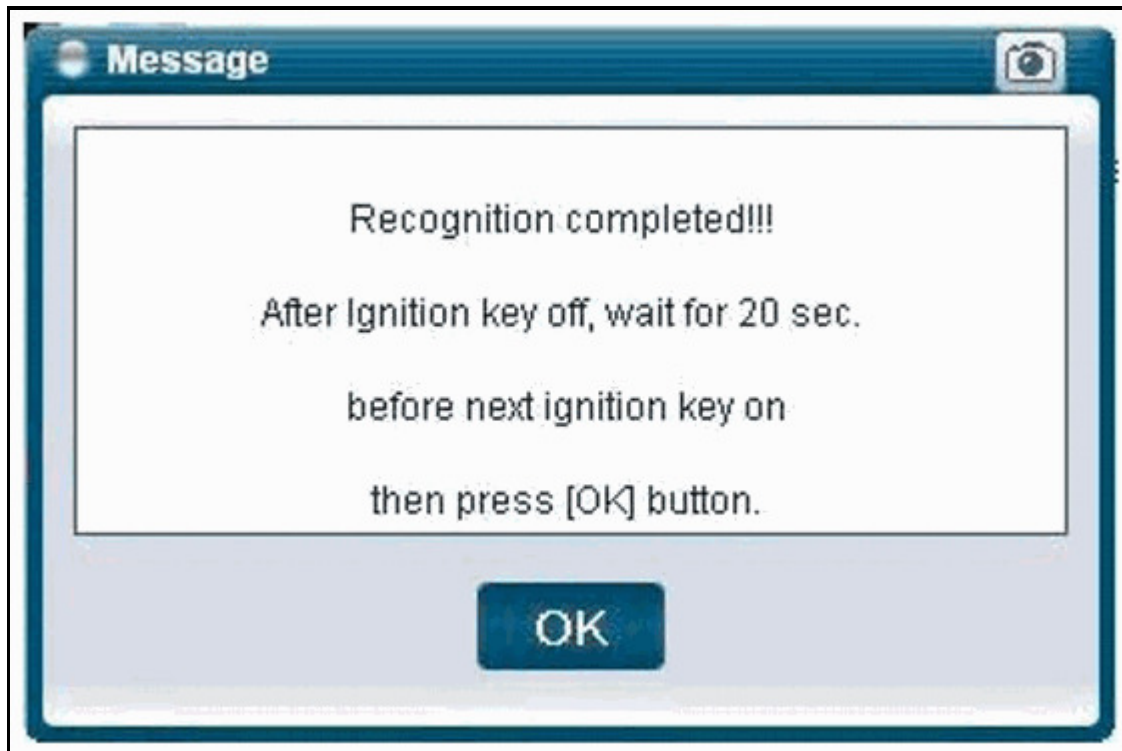


4. Select EPS Type Recognition.



5. This screen shows the current tuning selection. To change the tuning selection, use the drop-down menu to

select between available calibrations. Click OK to confirm the selection.



6. Turn the ignition OFF for 20 seconds, then back on again, and click OK.
7. Start the engine and confirm normal operation to complete the procedure.